



Holiday Resorts



Log Cabins

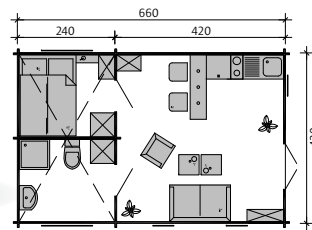
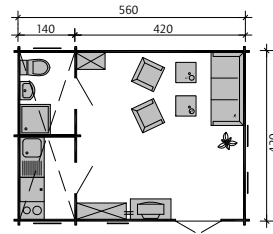
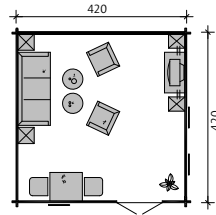


Gazebos



# Wooden Structures...

# Bern 45 plus Log Cabin



Roof extension

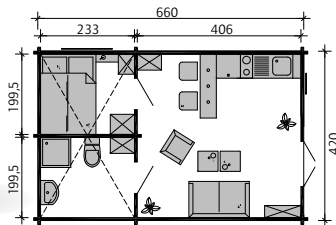
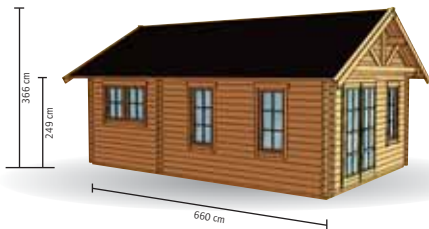
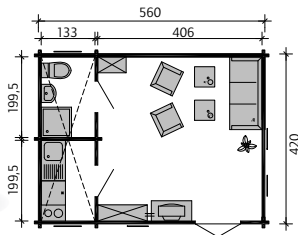
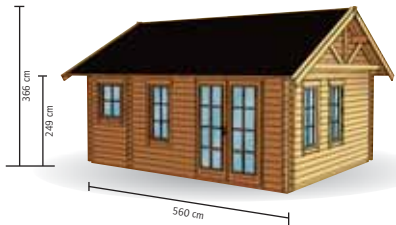
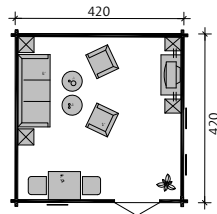


Balustrade for roof extension





# Toronto 70 plus Log Cabin



Roof extension

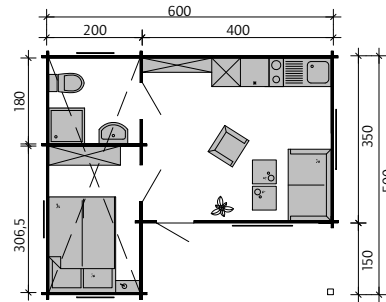
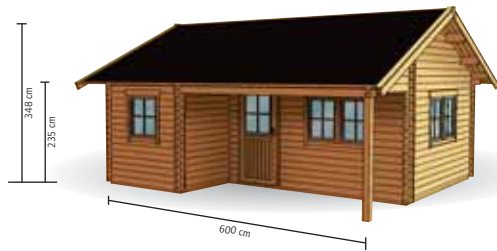


Balustrade for roof extension

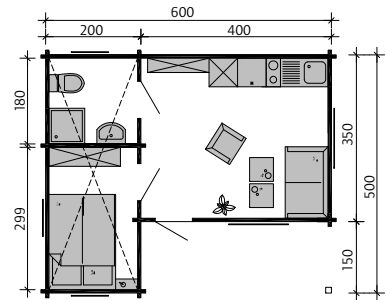




# St. Moritz 45 plus Log Cabin

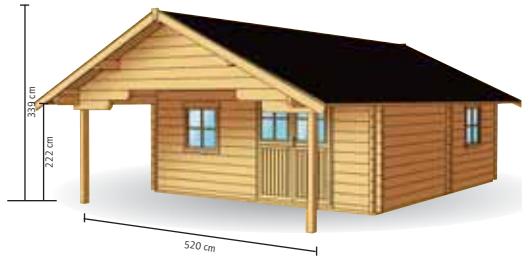


# Ontario 70 plus Log Cabin

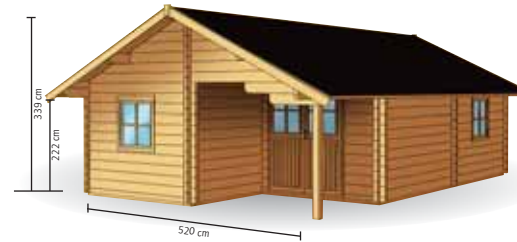




# Albany



# Portland



# Vancouver



# Ottawa







# 45 plus / 70 plus Log Cabins





# Holiday Resorts

# Insulation and Quality



Floor can be insulated



Two options available for insulated roof: shingles or tiles (insulation material, shingles and tiles not included)



Windows and doors are mounted on guide rails to increase stability and tightness of fit



Mortise lock with profile cylinder



Windows and doors with rubber seal



Window frame in glued laminated timber with concealed frames, windows with insulated glass and aluminium nose drop

## Assembly example



**1. Foundation and bearers...** First establish a strong, level foundation. This forms the base for all log cabins, makes assembly easier and prolongs the functionality and usable life considerably. We recommend: a frost-proof and formed concrete foundation. Afterwards the bearers are laid according to the assembly instructions. Anchor the floor beams on the strip foundation using bolts (on-site). Insulation can be provided between the bearers if desired.



**2. Assemble the walls and then start assembling the house...** Insert the logs in one another for this. The first row of logs is attached to the bearer using screws. The logs are connected to each other using concealed horizontal threaded rods.



**3. Building the roof...** Cover the roof board after installing the purlins. The purlins are screwed to the gable wall logs.



**4. Insulate if necessary (only for 45 plus and 70 mm)...**

Assemble additional roof parts of the respective kit on the roof board if required. A counter batten and batten for the kit for tiling, a counter batten and second board for shingles. It is possible to insulate the roof for the kits for tiling and shingles.



**5. Apply roof covering...** Now cover the roof. The basic kit includes a layer of roofing felt and attachment material. the shingles can be optionally ordered . You can buy the roof tiles from your DIY store.



**6. Mount the fascias...** The supplied fascias are now attached.



**7. Installation of the windows and doors...**

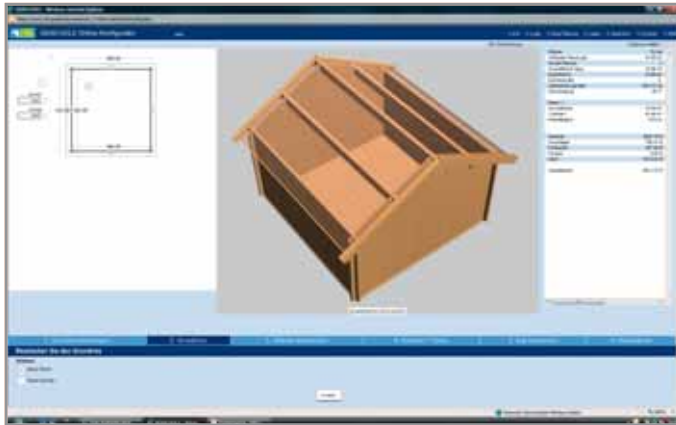
The windows and doors are installed with the rubber seals embedded in the logs (for 45 plus and 70 mm). This design increases the stability and tightness of the windows and doors. The windows have an aluminium nose drop.



**8. Floor boards...** Your cabin is almost complete. It just needs floor boards. These are installed and the skirting boards are attached. Finished!



# Configurator for Wooden Houses



**Step 1:**  
Start with one room

**Options:**

**Wall thickness**

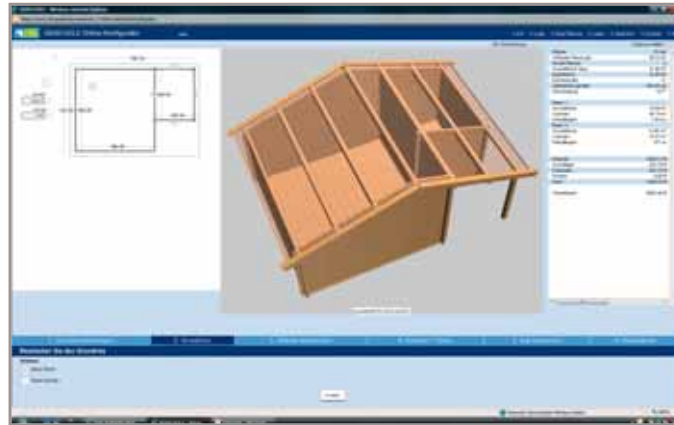
45 mm     70 mm

**Bearers**

no     60 mm     120 mm

**Floor**

no     19 mm     28 mm



**Step 2:**  
Add new rooms

**Floor**

add or delete

**Walls**

add or delete



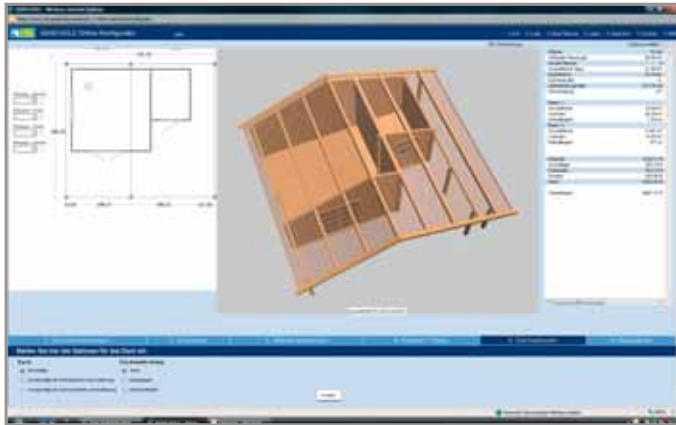
**Step 3:**  
Insert doors and windows

**Selection**

different **doors and windows**

Free positioning  
on the selected **wall**





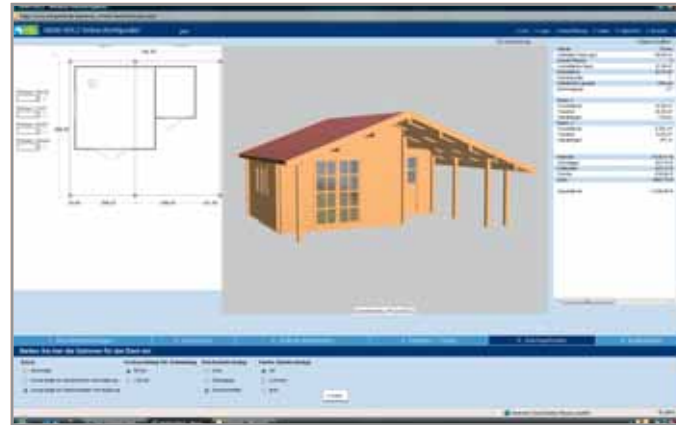
## Step 4: Create the roof

### Specify roof size:

Determination of the eaves

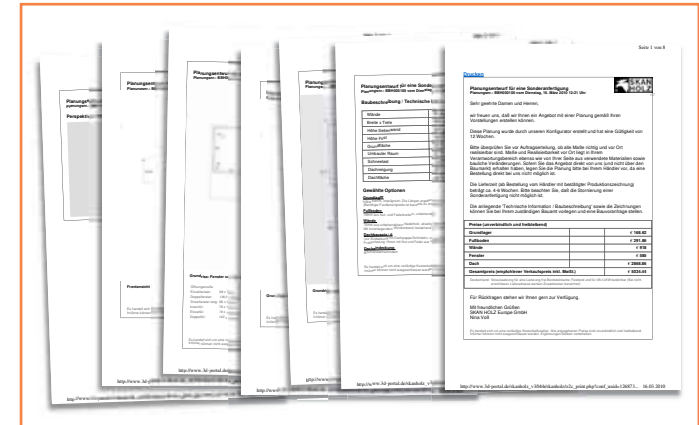
Specification of canopies or lean-to roofs

add or delete posts



## Step 5: Choose the roofing material

- no roof
- single skin     roofing felt
- double skin for insulation and shingles
- shingles
- red                     black             green
- double skin for insulation and panels



## Step 6: Print out offer and save the configuration

Print

Save



The SKAN HOLZ company has produced high quality log cabins for over 30 years. Our range of products include leisure retreats, holiday homes, holiday villas and individually manufactured log cabins.

We only use wood from Scandinavia for our log cabins. We manufacture log cabins with 45 mm and 70 mm log walls using the classic and stable interlocking system. All log cabins have a wind bracing made of metal bars that are embedded in the logs so that they are not visible.

We use special CAD programs for the construction of log cabins. The log cabins are manufactured using modern CNC-controlled machines.

Our log cabins are exported and sold throughout the world. We have many years of experience in loading containers and overseas shipments.

Last year, we developed an internet interface for preparing offers for individual log cabins. This configurator calculates the three dimensional representation in real-time and the price for the respective cabin.

Hereby, we are in a position to prepare individual offers including all the relevant drawings in the shortest time.

As well as the production of individual log cabins, we have a wide range of standard log cabins. We provide numerous supplementary products such as gazebos, terrace canopies, appliance rooms and carparks that we manufacture ourselves.

We offer you many years of experience in log cabin production, high quality, secure loading and calculable delivery times.

Your SKAN HOLZ team

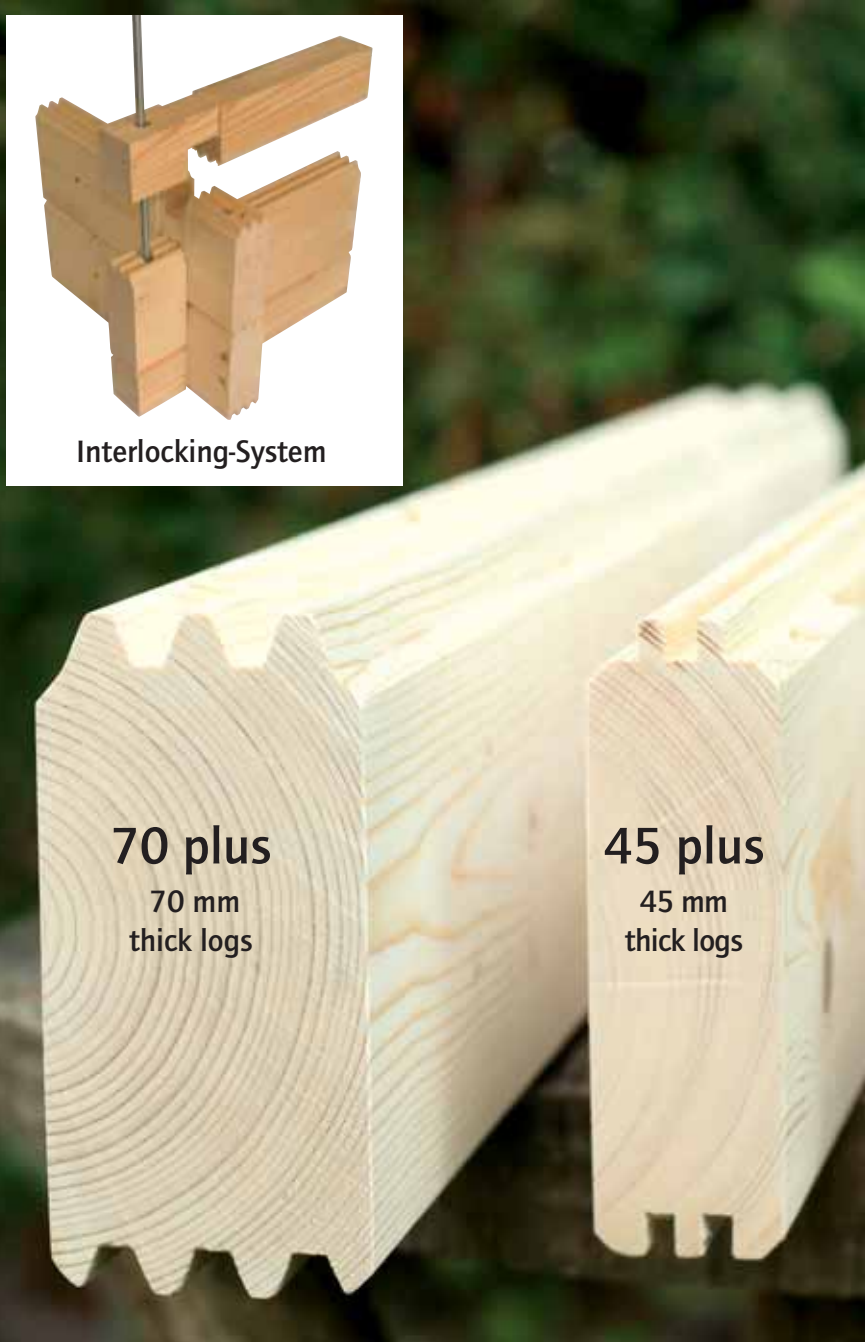




# Quality builds Trust



Interlocking-System



70 plus  
70 mm  
thick logs

45 plus  
45 mm  
thick logs



## Gazebos



Apart of the production of bespoke interlocking wooden homes, we offer as well a wide range of standard items.

We offer many different items, such as Terrasse roofs, Gazebos, Sheds, and carport with our own exclusive designs.



## Terrace-Roofs





# Log Cabins



Visit our website and view our program or download our catalogues in seven different languages

[www.skanholz.com](http://www.skanholz.com)



# Carports



## We provide you with:

- 30 years of experience in the manufacturing of log cabins
- High quality and stable construction
- Modern factory
- International sales network
- Log cabin configurator
- Manufacture of individual log cabins
- Leisure retreats and holiday homes
- Additional products
- German engineering



[www.skanhholz.com](http://www.skanhholz.com)  
[skanhholz-export@t-online.de](mailto:skanhholz-export@t-online.de)